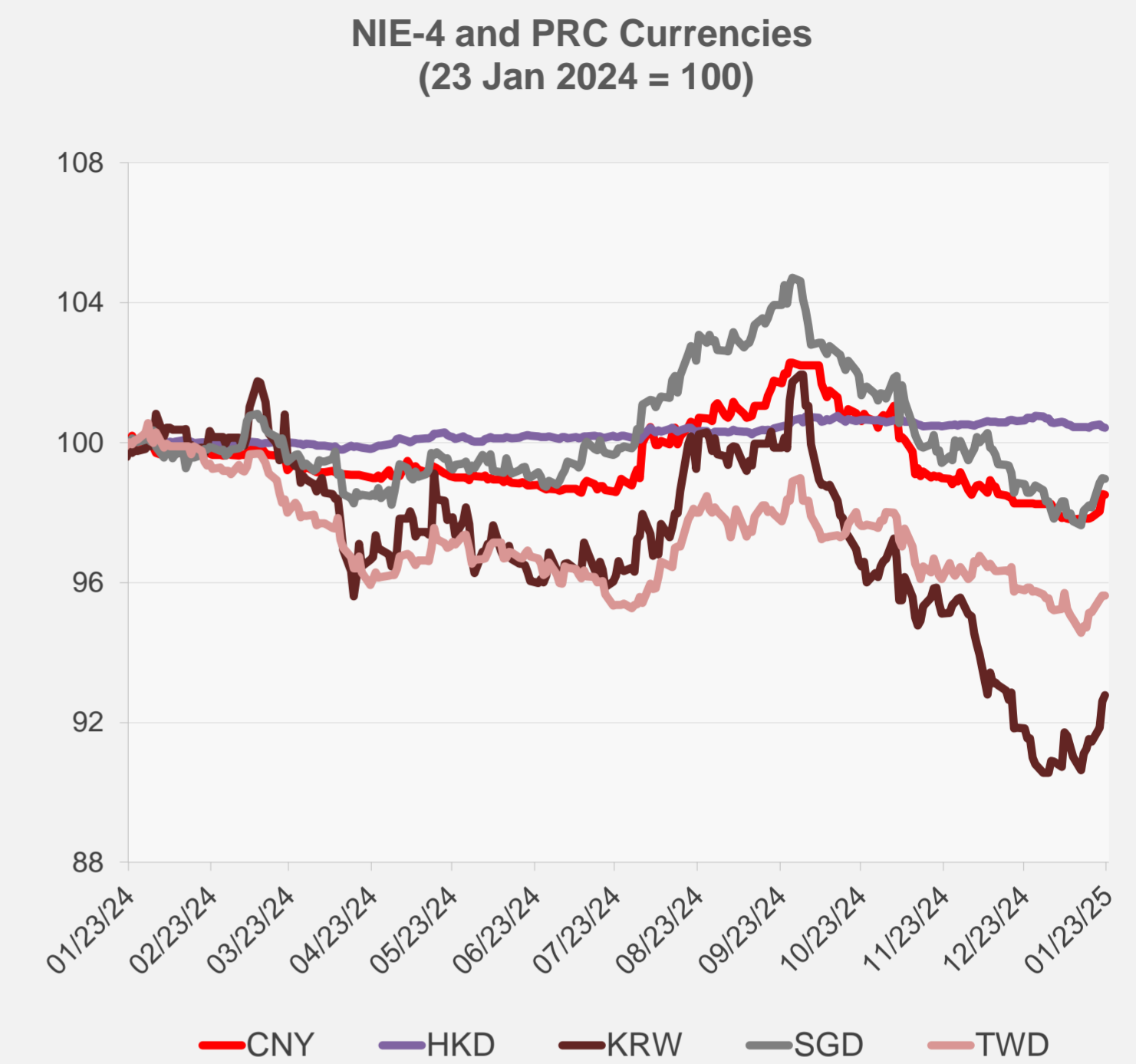
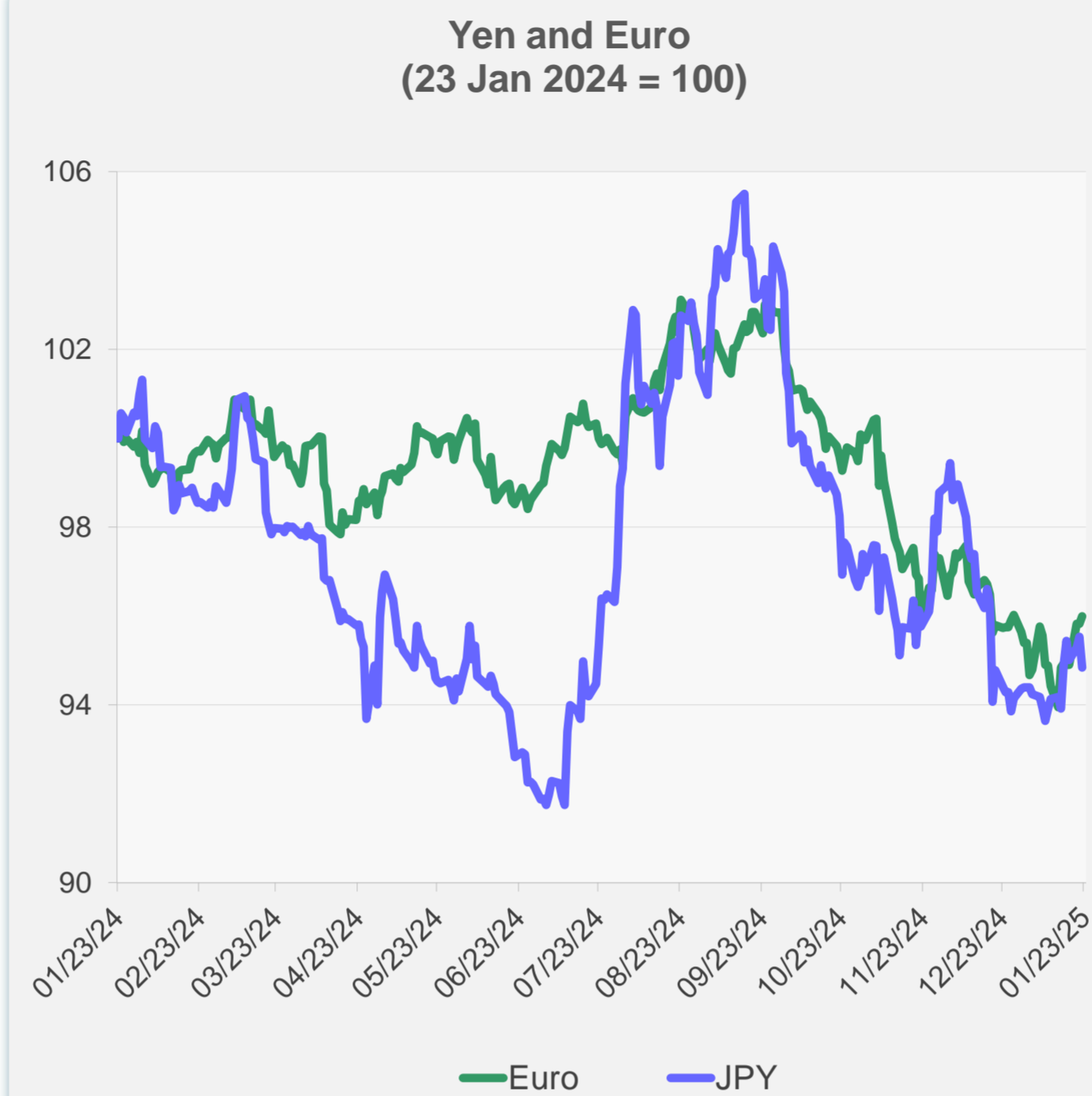
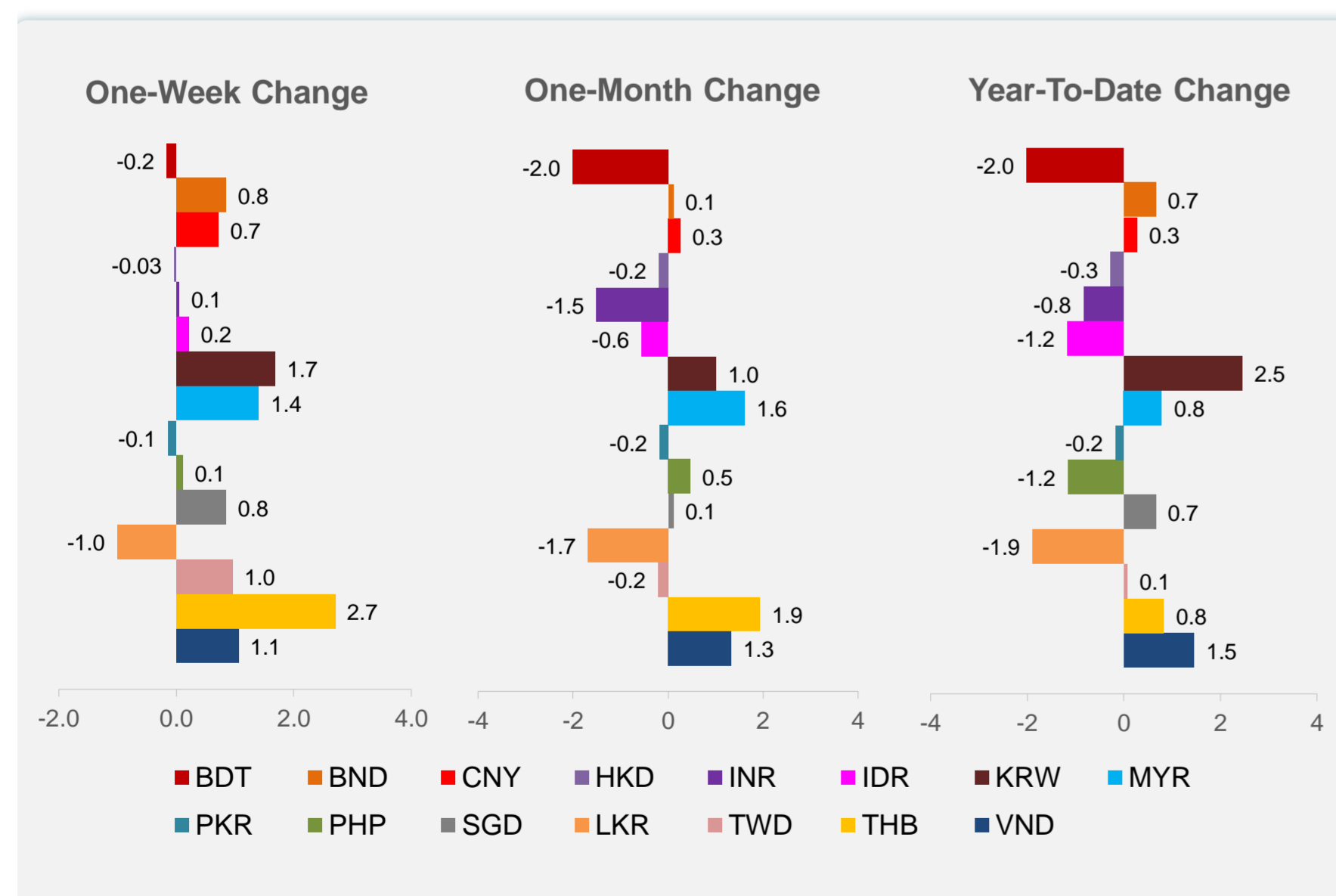
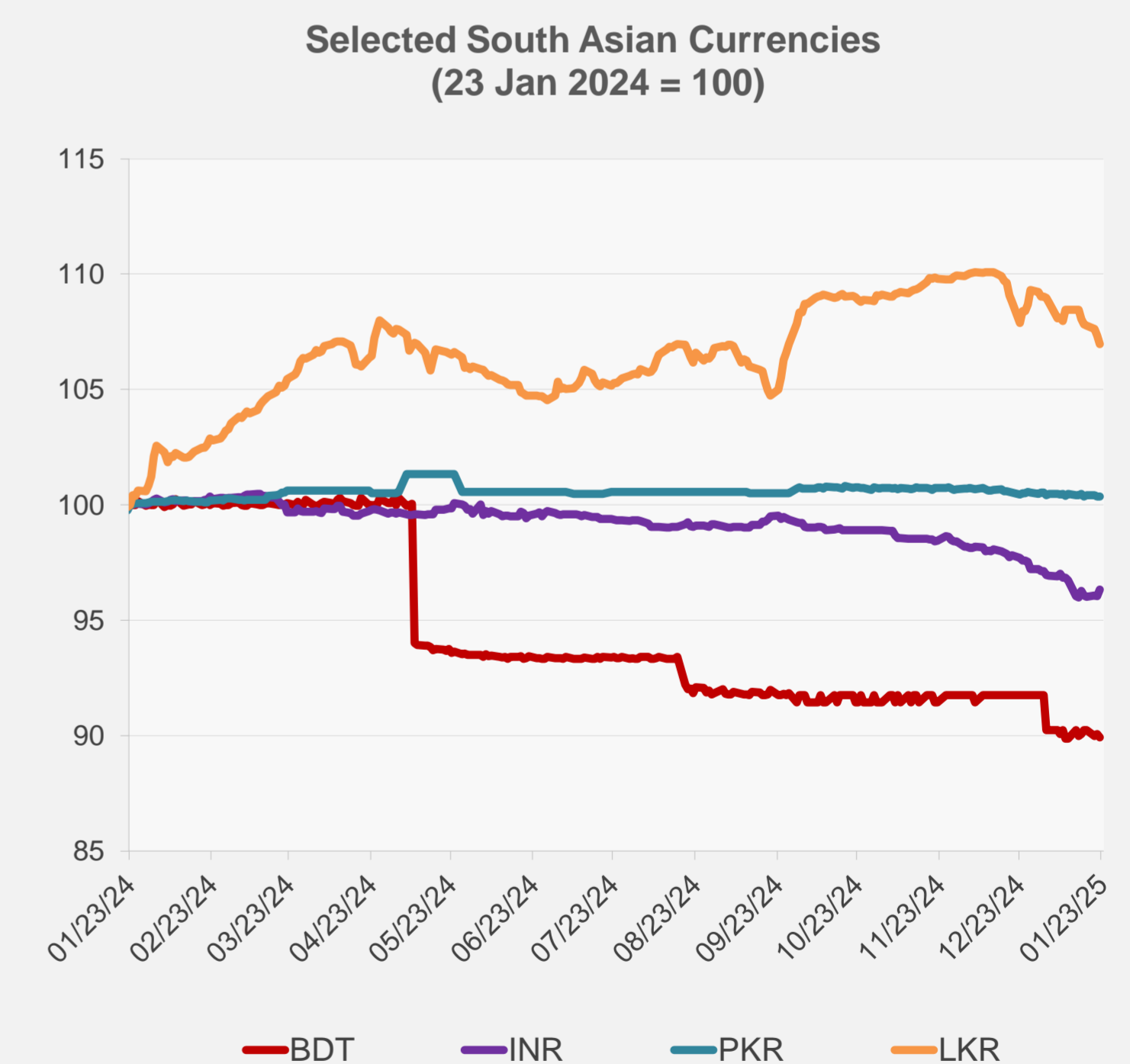
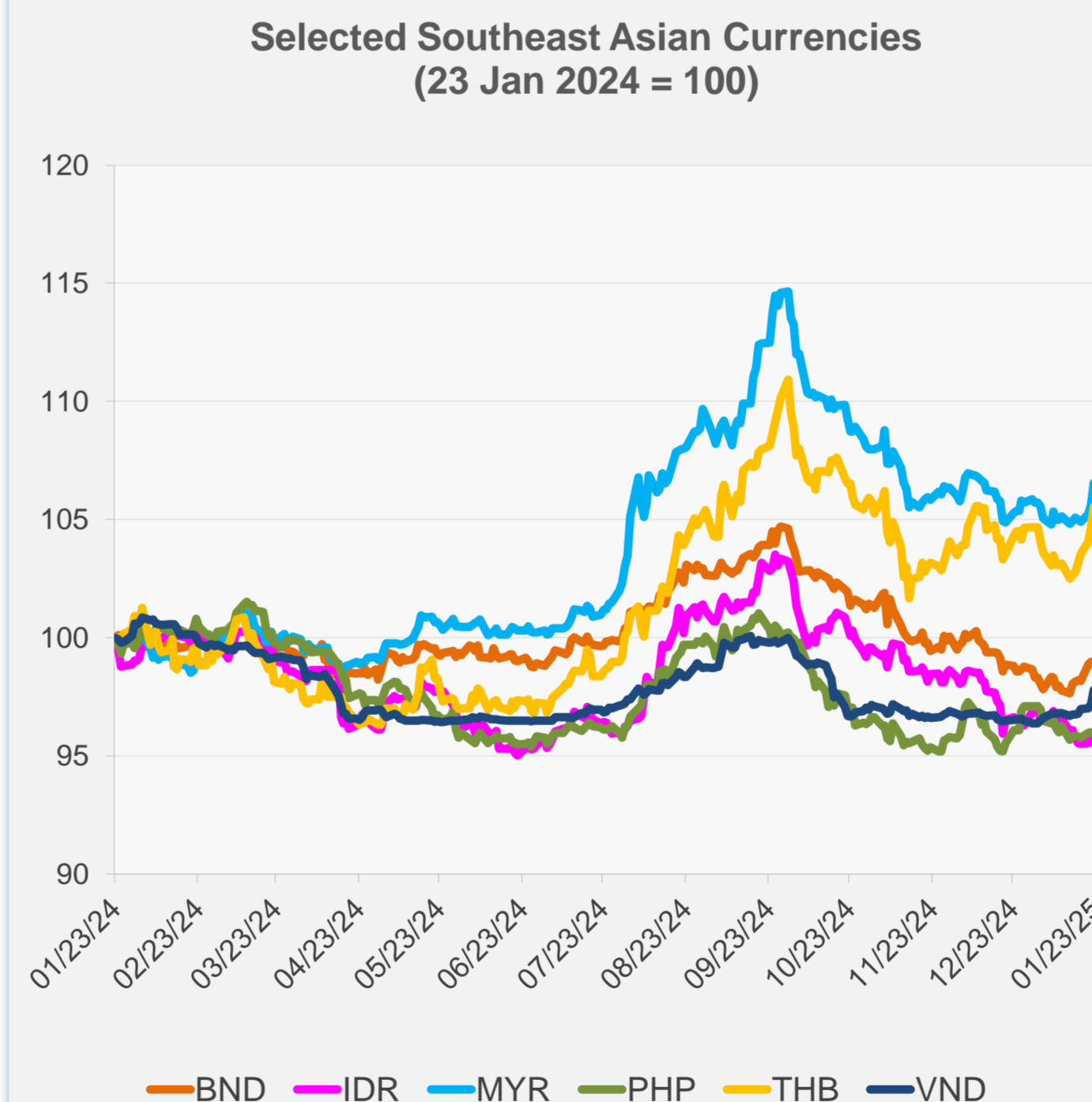


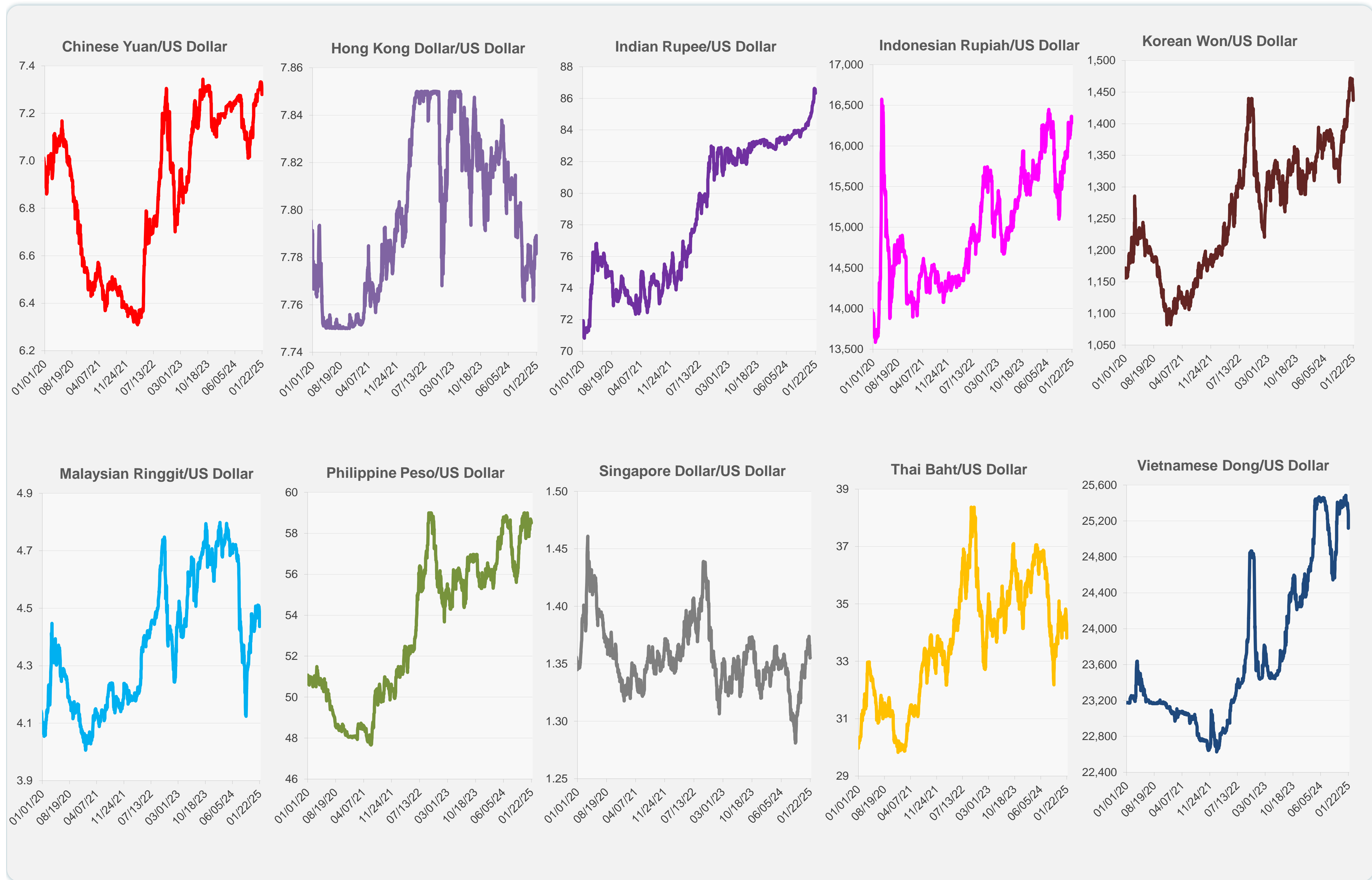
	Latest Closing	% change from Previous Day	% change from 01-Jan-25
Euro	0.96	0.19	0.63
Japanese yen (JPY)	156.42	-0.72	0.48
Bangladeshi taka (BDT)	121.95	-0.16	-2.01
Brunei dollar (BND)	1.36	-0.02	0.66
Chinese yuan (CNY)	7.28	0.00	0.27
Hong Kong dollar (HKD)	7.79	-0.04	-0.27
Indian rupee (INR)	86.33	0.30	-0.83
Indonesian rupiah (IDR)	16,285.00	0.31	-1.17
Korean won (KRW)	1,436.90	0.20	2.45
Malaysian ringgit (MYR)	4.44	0.88	0.79
Pakistan rupee (PKR)	278.85	-0.02	-0.17
Philippine peso (PHP)	58.52	-0.04	-1.15
Singapore dollar (SGD)	1.36	-0.02	0.66
Sri Lanka rupee (LKR)	298.63	-0.34	-1.89
Taipei,China NT dollar (TWD)	32.76	-0.01	0.07
Thai baht (THB)	33.82	0.87	0.83
Vietnamese dong (VND)	25,120.00	0.60	1.45



NIE = Newly Industrialized Economies



Note: Negative/Decreasing values indicate depreciation of local currency, and positive/increasing values indicate appreciation.  
Source: ADB calculations using data from Haver Analytics.

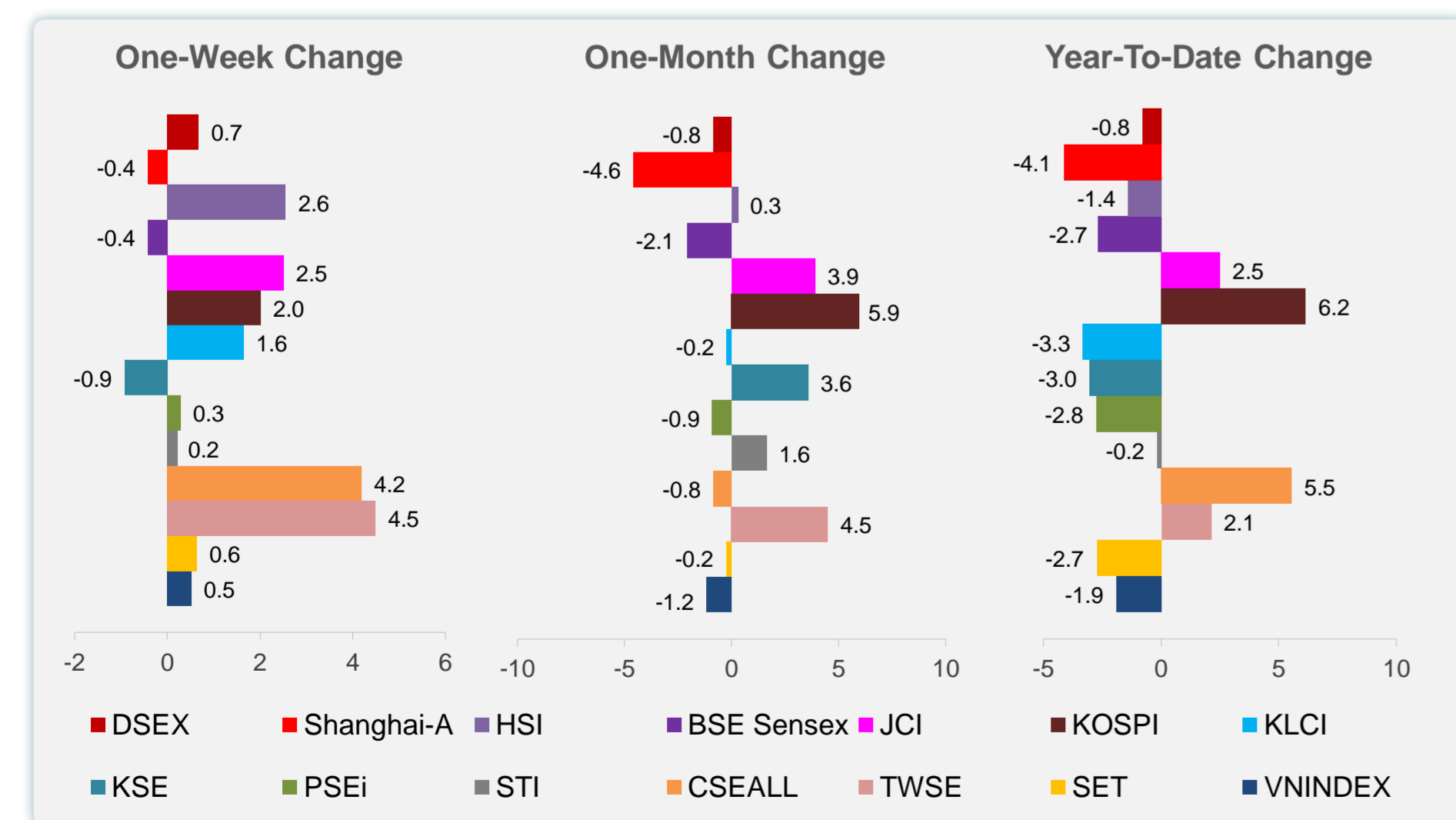
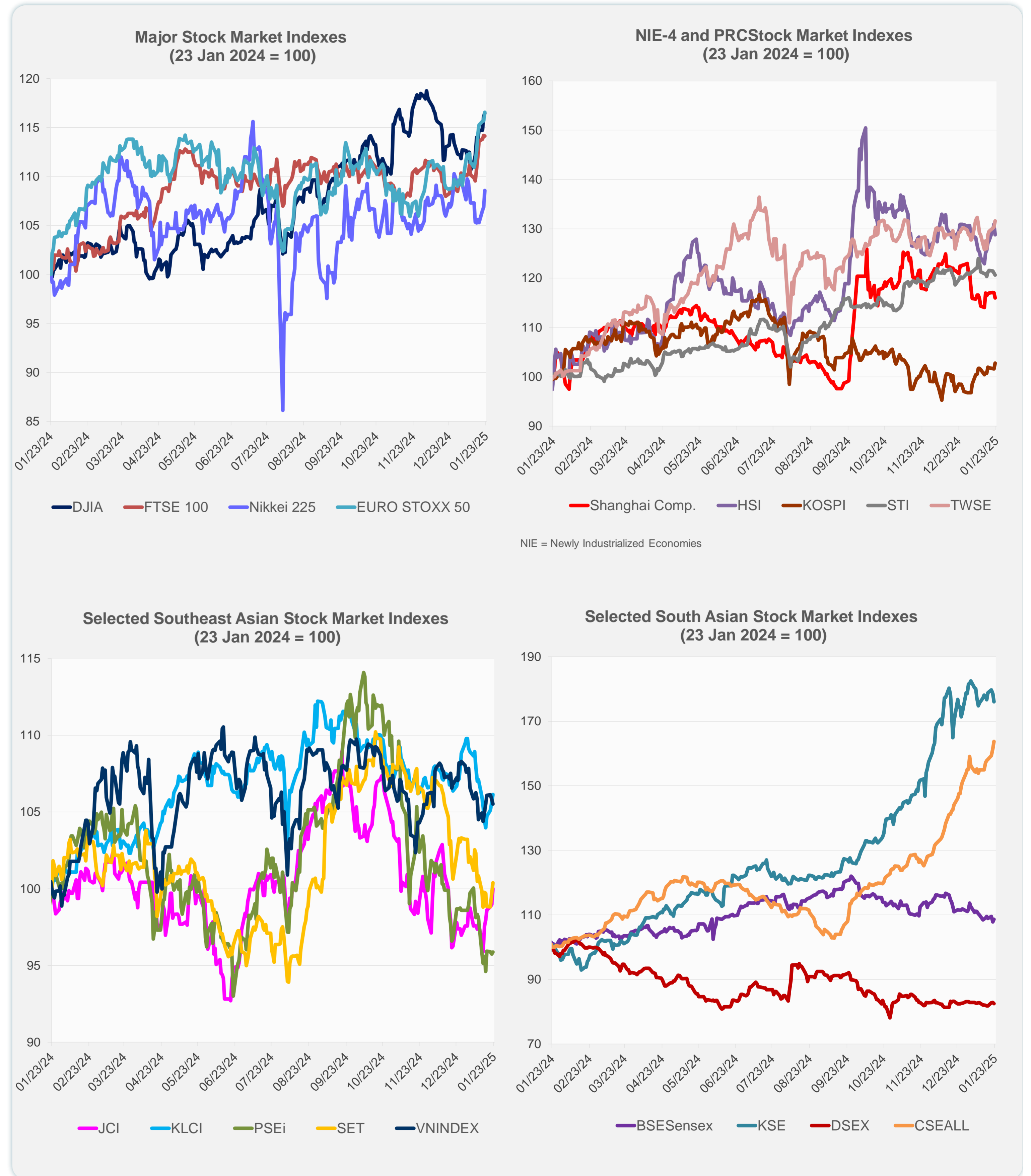


Source: Haver Analytics.

Daily Market Watch  
**STOCK INDEXES**

23 January 2025, 9:00 AM Manila

	Latest Closing	% change from Previous Day	% change from 01-Jan-25
US Dow Jones Ind Avg	44,156.73	0.30	3.79
US NASDAQ	20,009.34	1.28	3.62
US S&P 500	6,086.37	0.61	3.48
UK FTSE 100	8,545.13	-0.04	4.55
EURO STOXX 50	5,205.83	0.77	6.33
Japan NIKKEI 225	39,646.25	1.58	-0.62
Bangladesh DSEX	5,177.24	-0.49	-0.78
PRC Shanghai Comp.	3,213.62	-0.89	-4.12
Hong Kong, China HSI	19,778.77	-1.63	-1.40
India BSE Sensex	76,404.99	0.75	-2.68
Indonesia JCI	7,257.13	1.05	2.50
Korea, Rep. of KOSPI	2,547.06	1.15	6.15
Malaysia KLCI	1,587.80	0.46	-3.32
Pakistan KSE 100	113,443.43	-1.39	-3.05
Philippines PSEi	6,348.34	0.13	-2.76
Singapore STI	3,781.21	-0.37	-0.17
Sri Lanka CSEALL	16,828.80	1.40	5.55
Taipei, China TWSE	23,525.41	0.97	2.13
Thailand SET	1,361.77	0.68	-2.75
Viet Nam VNINDEX	1,242.53	-0.29	-1.91



Sources: ADB calculations using data from CEIC Data Company and Haver Analytics.



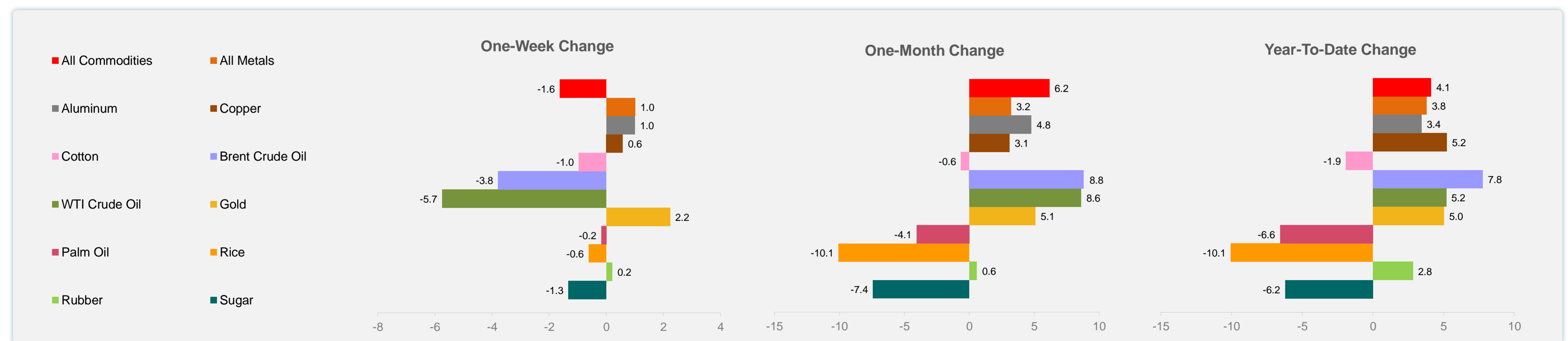
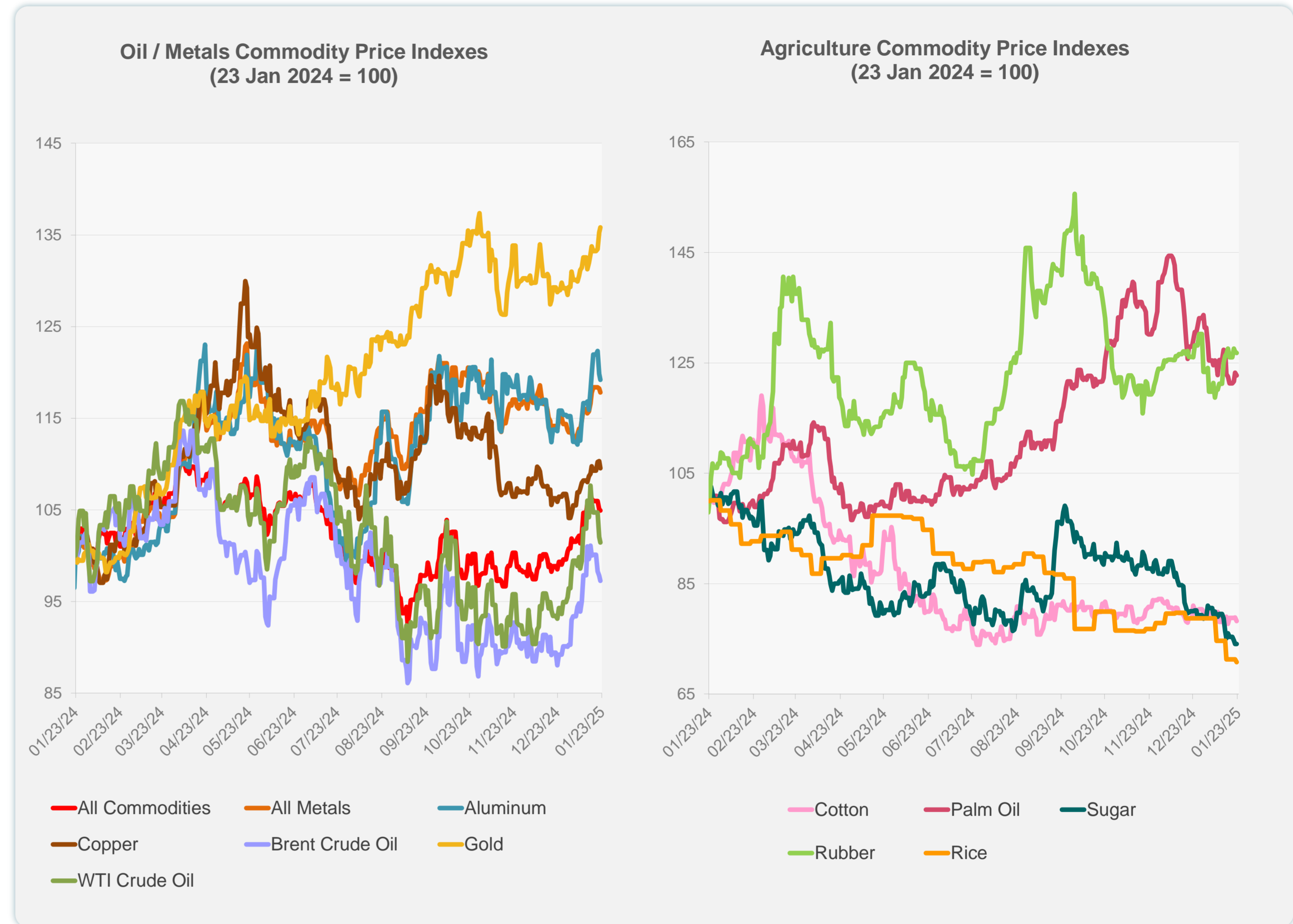
Sources: CEIC Data Company and Haver Analytics.

Daily Market Watch  
**COMMODITY PRICES**

23 January 2025, 9:00 AM Manila

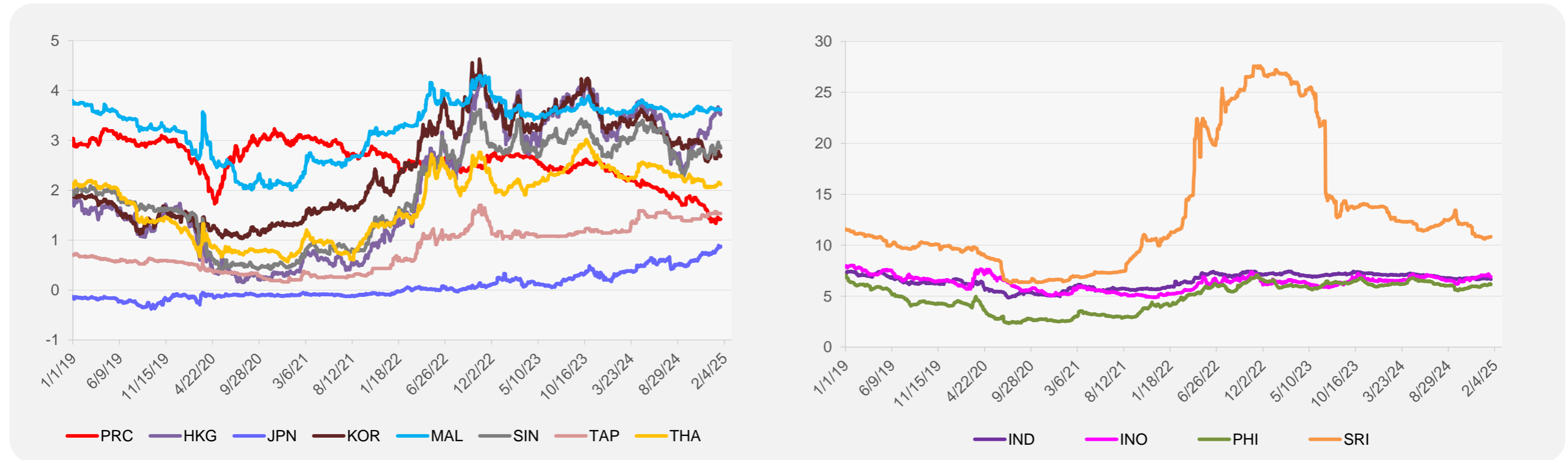
	Unit	Latest Closing	% change from Previous Day	% change from 01-Jan-25
S&P All Commodities	US\$	572.27	-0.13	4.12
S&P All Metals	US\$	319.07	-0.37	3.81
Aluminum	US\$/metric ton	2,613.83	-0.55	3.45
Copper	US\$/metric ton	9,105.45	-0.69	5.23
Cotton	US cents/lb	64.64	-0.80	-1.91
Brent Crude Oil	US\$/barrel	79.87	-0.55	7.77
WTI Crude Oil	US\$/barrel	75.44	-0.59	5.19
Gold	US\$/troy oz	2,756.48	0.43	5.03
Palm Oil	US\$/metric tonne	1,027.89	-0.40	-6.57
Rice <sup>1</sup>	US\$/metric ton	483.00	-0.62	-10.06
Rubber <sup>2</sup>	US\$/kg	243.50	-0.16	2.83
Sugar	US cents/lb	17.07	0.00	-6.21

<sup>1</sup> Latest closing price from 22 January 2025.  
<sup>2</sup> Singapore Exchange, Ribbed Smoked Sheet Rubber.

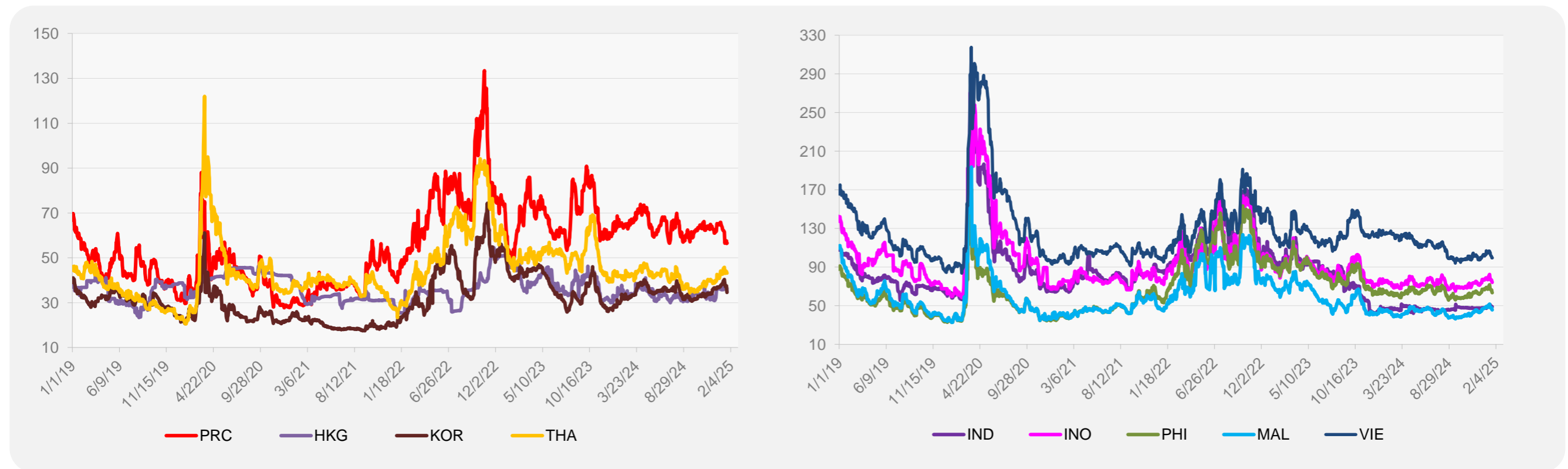


Source: ADB calculations using data from Bloomberg.

### 5-YEAR LOCAL CURRENCY GOVERNMENT BOND YIELDS (%)



### 5-YEAR CREDIT DEFAULT SWAP<sup>1</sup>



<sup>1</sup> In USD and based on sovereign bonds.  
Source: ADB calculations using data from Bloomberg.